

KaeMix Student 2025 Installation

KaeMix Documentation

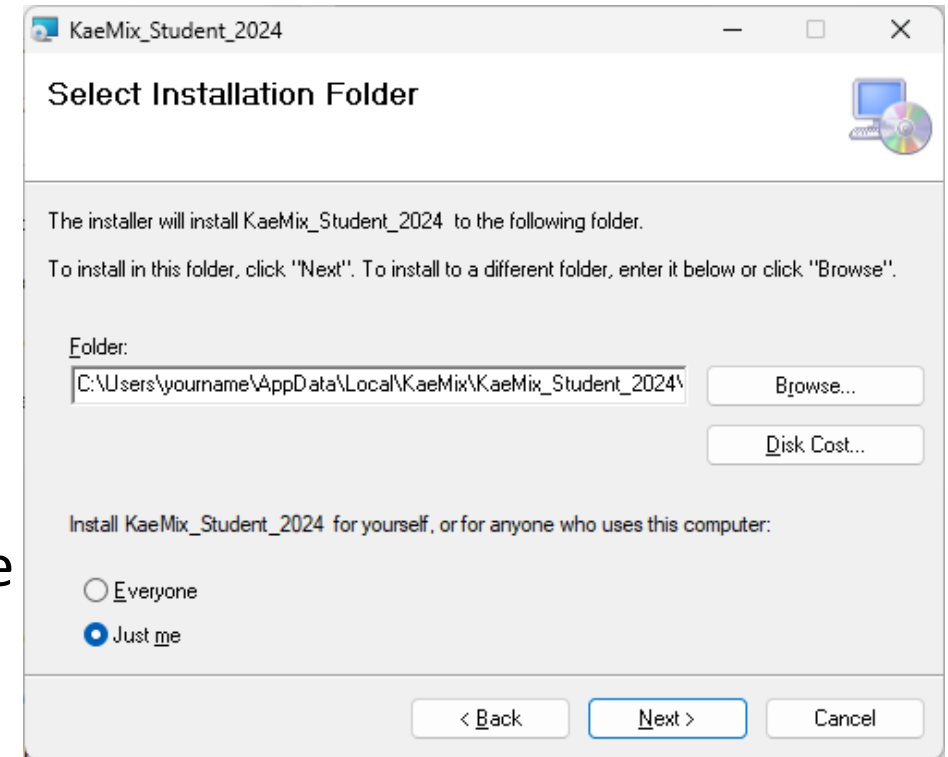
May 27, 2025

www.kaemixllc.com

support@kaemixllc.com

KaeMix Installation (1/2)

- KaeMix requires 64-bit Windows and a screen resolution of 1920x1080 or greater
- Download and unzip SetupKaeMix*.zip
- Launch SetupKaeMix*.msi
- Follow the steps in the Setup Wizard
- Leave the default settings in the *Select Installation Folder panel*.
 - Default installs in
[User] \AppData\Local\KaeMix
 - Do not install in Windows systems folders (such as C:\Program Files). May not have required write permissions or security software may block writing
 - KaeMix creates
[User] \AppData\Roaming\KaeMix to save settings and temporary files



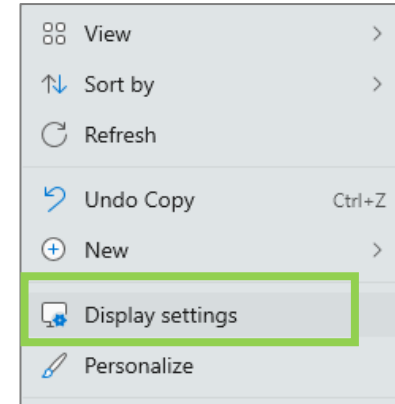
KaeMix Installation (2/2)

- KaeMix Student requires Microsoft .Net 8.0 to run
- To install this, run the file named:

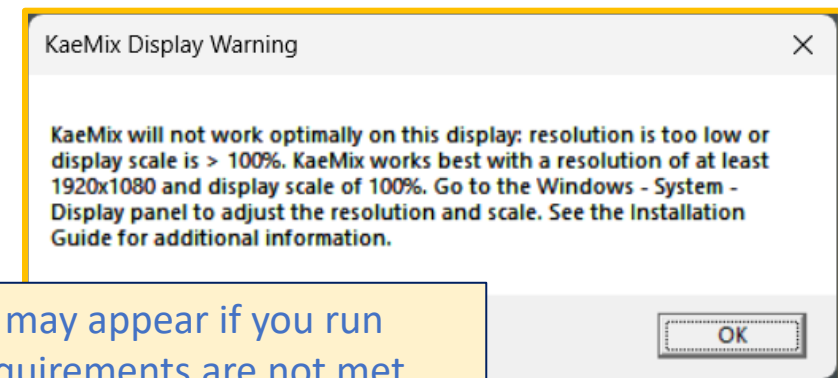
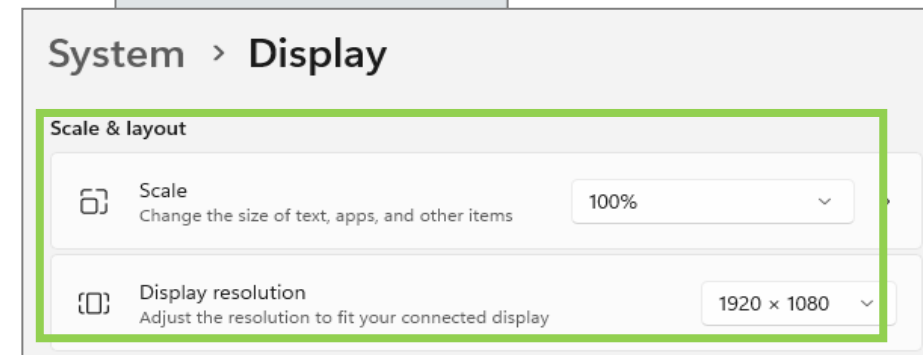
`windowsdesktop-runtime-8.0.10-win-x64.exe`

Windows Display Settings (1/3)

- KaeMix requires a display resolution of 1920x1080 or greater
 - This is the most common desktop monitor and HDTV resolution
 - Most modern, mid-range, laptops will meet this requirements
 - Older or budget laptops may not meet this
 - The KaeMix window will not fit on screens with a lower resolution. Slider bars will be displayed on the sides of the KaeMix window, and it is able to be used, but usage may be inconvenient
 - For a screen resolution of 1920x1080, the Windows System Display Scale should be 100% for best usage
 - For larger screen resolutions, the Display Scale can be > 100%
 - For example, for 4k screens, the Windows recommended System Display Scale of 150% works well with KaeMix

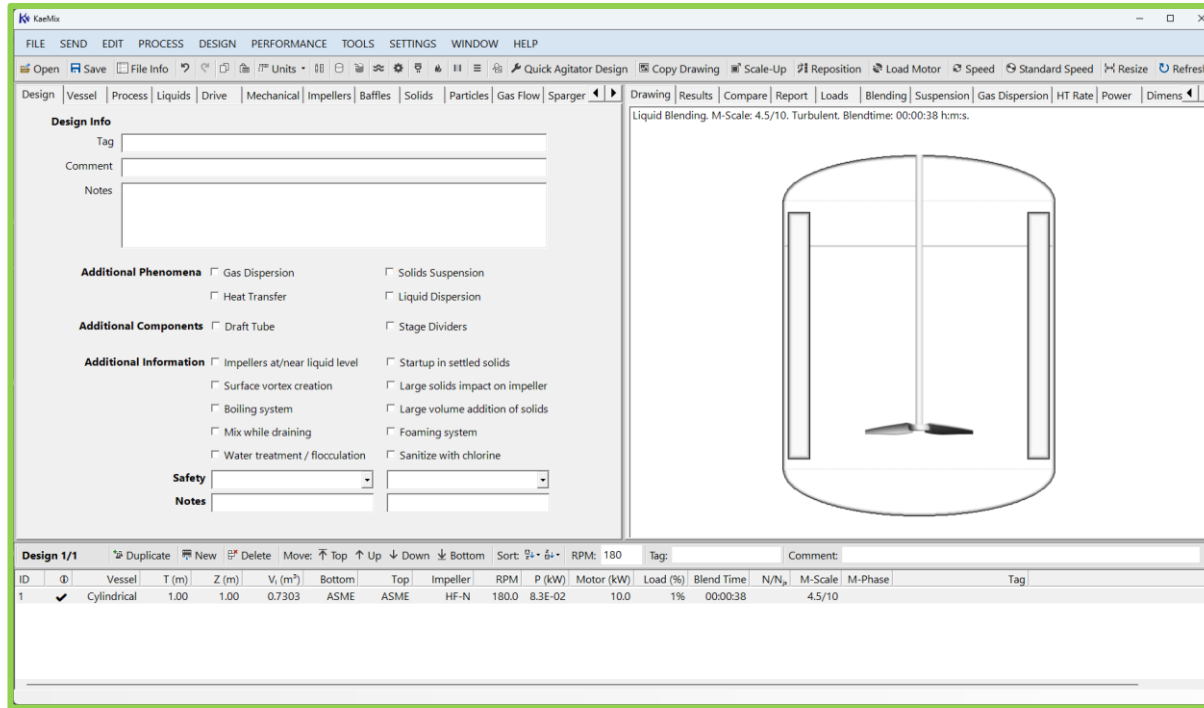


- 1) Click on the Windows Desktop with the right mouse button
- 2) Click on Display settings
- 3) Set Display resolution to 1920x1080 or greater
- 4) If resolution is 1920x1080, set Scale to 100%

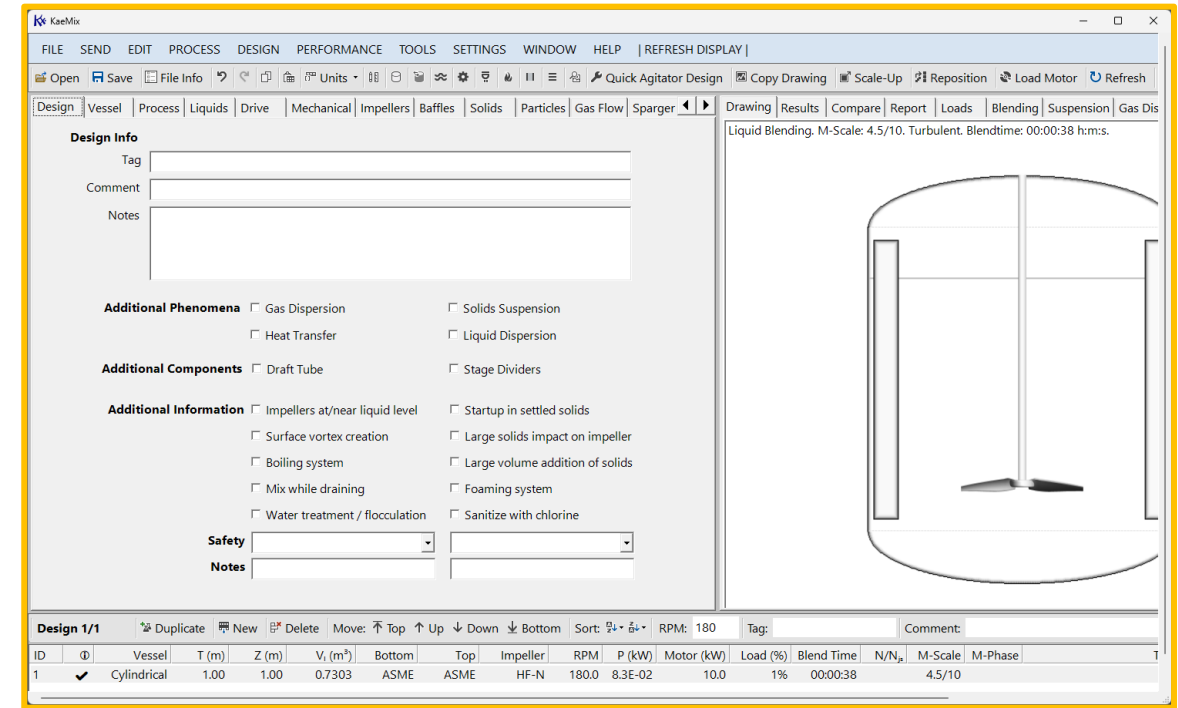


This warning message may appear if you run KaeMix and display requirements are not met

Windows Display Settings (2/3)



This is how the KaeMix window looks if display requirements are met



If display requirements are NOT met, part of the KaeMix window is cut off and scroll bars appear on the right side and bottom of the window to move it around

Windows Display Settings (3/3)

- Special case (most often encountered on laptops) Scale is 125% (or 150%) with display resolutions shown here
- You can make KaeMix display properly by either setting the Scale to 100% (affects all applications) or by changing the KaeMix properties in Windows (only KaeMix is affected) as described here

Scale & layout



Scale

Change the size of text, apps, and other items

Some apps won't respond to scaling changes until you close and reopen them.

125%



Display resolution

Adjust the resolution to fit your connected display

1920 × 1080



2560 × 1080

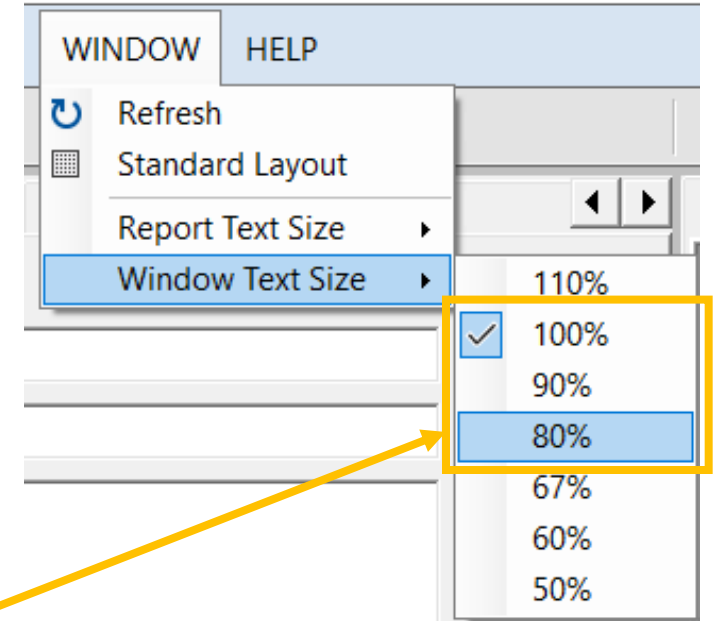
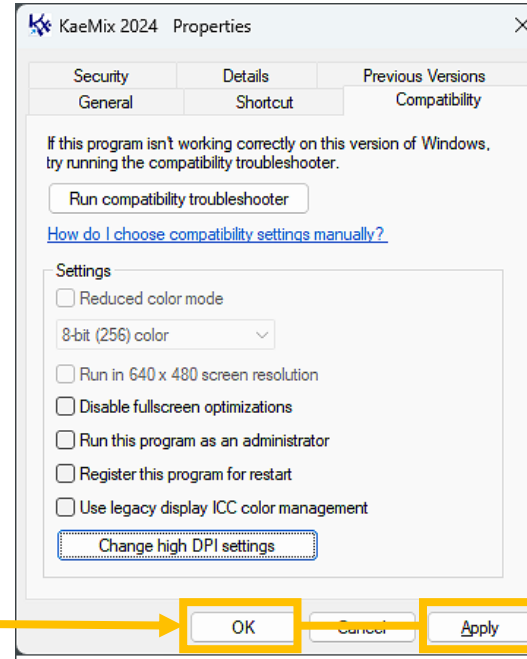
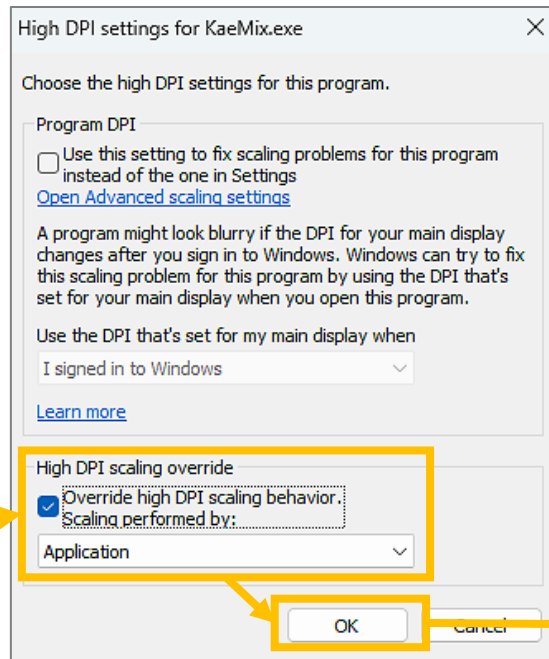
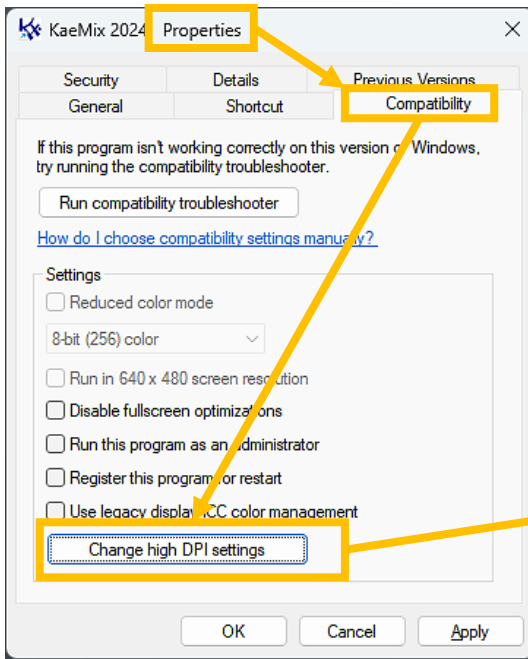
2048 × 1536

2048 × 1152

1920 × 2160

1920 × 1200

1920 × 1080



Right click on KaeMix icon. Select Properties. Select Compatibility. Click Change high DPI settings

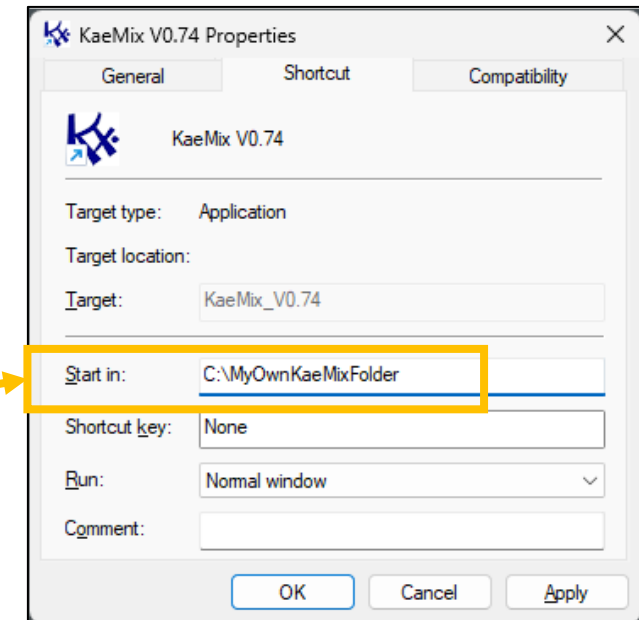
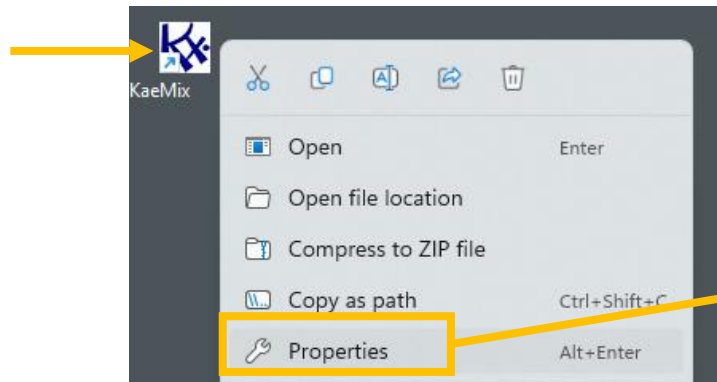
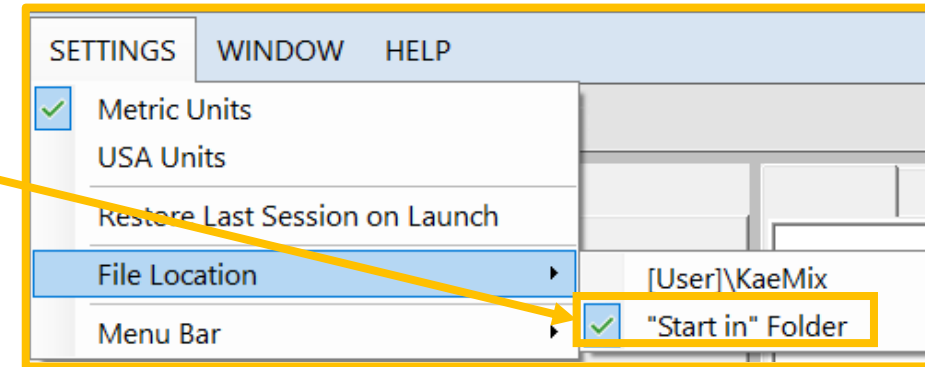
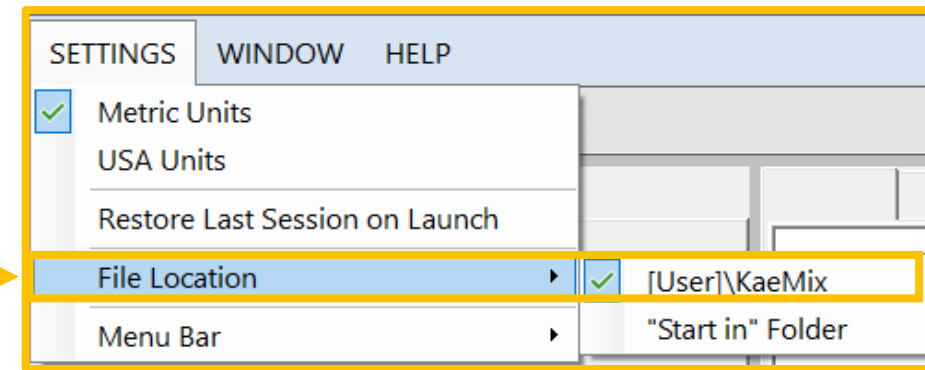
Check Override high DPI scaling. Select Application. Click OK.

Click Apply and OK

Launch KaeMix. Should be all fine. If needed, can tweak Window and Report Text Size

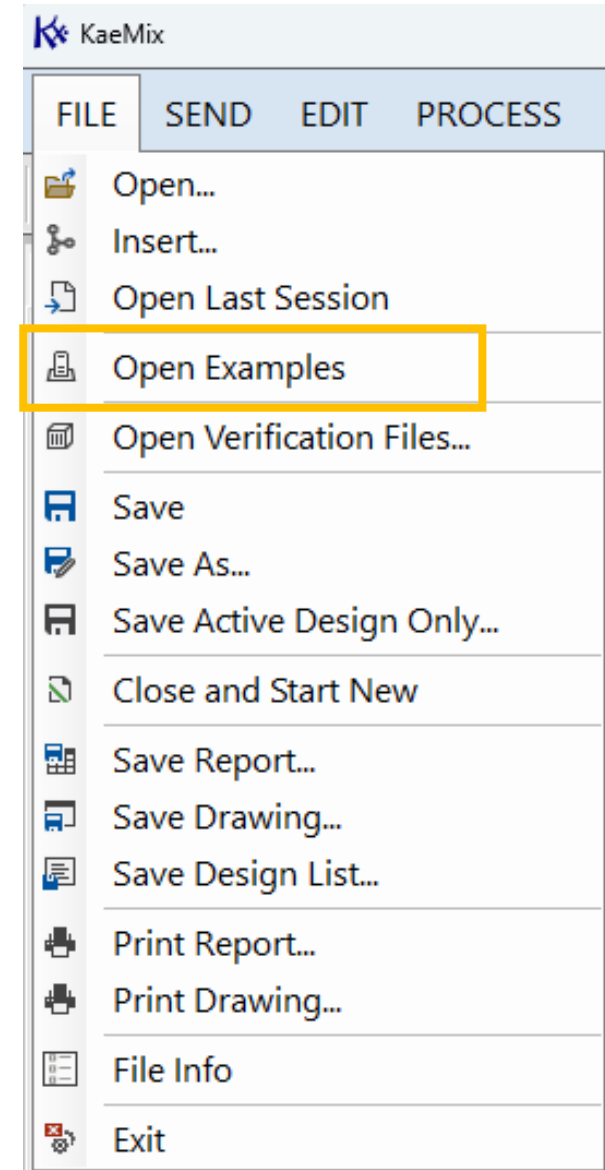
Settings – File Location

- You can control where KaeMix files are saved
- Default is [User]\KaeMix folder and usually looks like this: “C:\Users\yourname\KaeMix”
- To save in another location, select “Start in” Folder instead
- Specify the “Start in” Folder as follows
 - Right click on the KaeMix icon on the desktop and then click on Properties
 - Then specify the “Start In” folder and click Apply. Next time you launch KaeMix it will default to the “Start In” folder that you specified here



Built In Examples

- After launching KaeMix you can start exploring from File → Open Examples
- This will open a file with multiple examples that highlight KaeMix's capabilities
- If Open Examples is grayed out it means that KaeMix can not locate the file named Examples*.kaemix
- In that case copy the file [User] \ AppData\Local\KaeMix\KaeMix* \ Examples*.kaemix to the KaeMix file folder (specified under Settings → File Location)



Troubleshooting

- If KaeMix hangs for a long time when launching, do the following:
 - Close all open KaeMix sessions
 - Use the Task Manager to close any remaining, hanging, KaeMix sessions
 - Use Windows File Explorer to browse to `[User]\AppData\Roaming\KaeMix` which is where it saves settings and temporary files
 - Remove the files named `LastSession.KaeMix` and `~restorelastsession`
 - Launch KaeMix again
- If the Report tab in KaeMix is blank and does not show a report, the most likely cause is that Windows blocks writing to the KaeMix installation folder. This can happen if KaeMix is installed to a systems folder such as `C:\Program Files`. In that case uninstall KaeMix using *Add or Remove Programs* in the *Windows Control Panel*. Then reinstall KaeMix to the default installation folder `[User]\AppData\Local\KaeMix`

Removing Old KaeMix Installations

To remove older KaeMix versions, use *Add or Remove Programs* in the Windows Control panel as shown below

1 Type *add or remove programs* in the Windows search box

2 Click on *Add or remove programs* in the menu

3 Windows will show **Apps > Installed apps**. Type *kaemix* in the search box

4 Click on the three dots ... next to the version you wish to remove

5 Click *Uninstall* in the pop-up menu

6 Click *Uninstall* in the pop-up window. Windows will then start the uninstall process.

END